

actxa

Swift

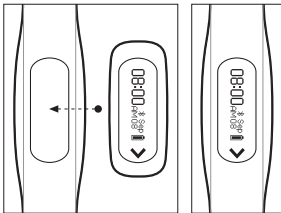
Activity Tracker

Model No: AX-A100

Quick Start & Warranty

01 › Assemble The Swift

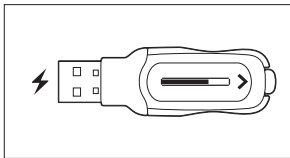
The Swift activity tracker comes with a base unit and a strap. For optimal comfort and water resistance, ensure that the base unit is securely fitted into the strap.



02 › Switch The Swift On

To conserve battery, the activity tracker is set to hibernation mode during manufacturing. For first time usage, place the device into the charging cradle and charge it with a USB port. The device will start up and be ready for use.

If the battery indicator displays low battery level, you should fully charge the activity tracker before using it. Refer to the section on 'Charging The Battery'.



03 › Install The App

The Actxa App can be installed from the App Store or Google Play.

Alternatively, scan the QR code below to download the App.



04 › Sync The Swift With The Actxa App

Launch the Actxa App and follow the on-screen instructions to activate your product and pair the device with your smart phone. After the device is successfully paired, you will then be able to sync your activity information from the device to the App.



Operation

For optimal accuracy, wear the device on your non-dominant hand. For example, if you are a right-hander, wear the device on your left hand. To activate the display, simply tap at the arrow on the screen. Tap continuously to view different activity information.



Time/Date



Steps



Calories Burned



Distance



Activity Time

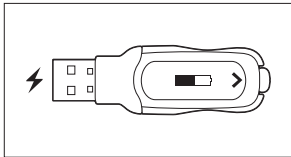


Alarm

Charging The Battery

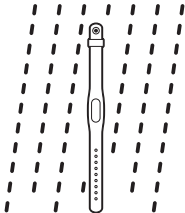
The battery indicator is displayed on the home screen of the device. Charge the device when there is 1 bar left on the battery indicator. The whole charging process should take less than 2 hours.

A fully charged device should last for approximately 5 days.



Water Resistant

When the base unit is securely fitted to the strap (Refer to 01 › Assemble The Swift), the device is water resistant and can withstand accidental splashing. However, please remove the device when swimming, engaging in water sports or entering a steam/sauna room.



License & Copyright

© 2016 Actxa Pte Ltd. All rights reserved. Actxa, the Actxa logo, Swift and the Swift logo are trademarks or registered trademarks of Actxa Pte Ltd, in Singapore and/or other countries. The Bluetooth® word mark and logos are registered trademarks owned by Bluetooth SIG Inc. Apple and the Apple logo are trademarks of Apple Inc., registered in the U.S. and other countries. App Store is a service mark of Apple Inc., Android, Google Play and the Google Play logo are trademarks of Google Inc., and any use of such marks by Actxa Pte Ltd is under license. All other trademarks and trade names are those of their respective owners. All specifications are subject to change without prior notice. Use of this product is subject to a limited hardware warranty. Actual contents may differ slightly from those pictured.

Disclaimer

The information in this document is subject to change without notice and does not represent a commitment on the part of Actxa Pte Ltd. No part of this document may be reproduced or transmitted in any form or by any means, **electronic or mechanical**, including photocopying and recording, for any purpose without the written permission of Actxa Pte Ltd.

For more information about Actxa Pte Ltd and Actxa's products, please visit the **www.actxa.com** site.

Limited Product Warranty

The Actxa Swift activity tracker (The 'Product') is guaranteed against manufacturer's defects for a period of 1 year from the date of purchase. This warranty only covers defects in materials and workmanship. If the activity tracker is found to be faulty due to defects in materials and workmanship, the authorized service provider will replace it with a new activity tracker.

The warranty does not cover normal wear and tear, excessive abuse or misuse and damage arising from failure to follow instructions relating to the Product's use. This Limited Warranty does not cover the services provided by Actxa Pte Ltd or any 3rd party service provider to owners of the Product. All warranty claims must be accompanied by a sales receipt and this warranty booklet.

Please visit www.actxa.com/support for more information.

Complies with
IDA Standards
DA107472

www.actxa.com